



Be Brilliant™

EarWear 3.0

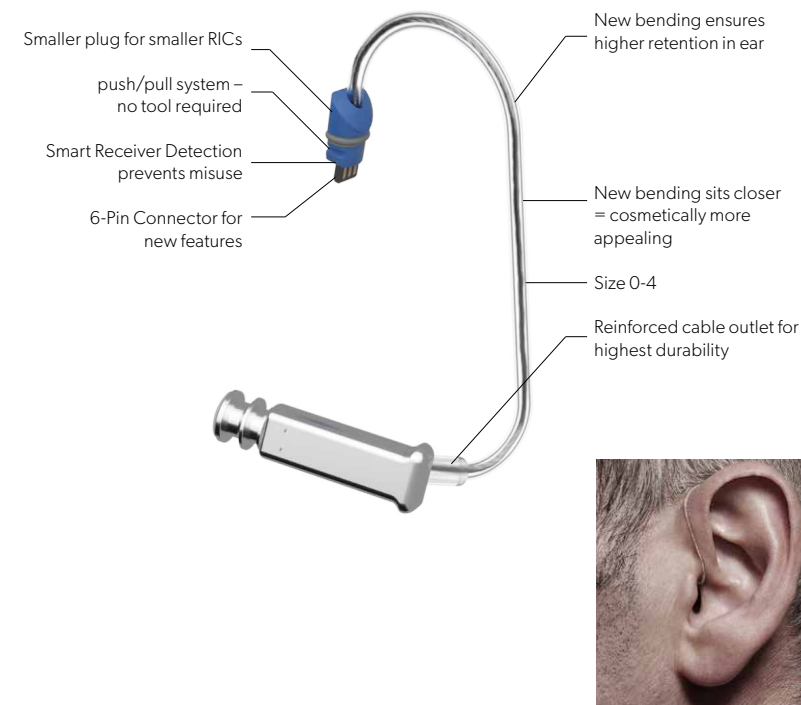


signia

EarWear 3.0

Why new EarWear

Our new EarWear 3.0 offers a higher physical fit rate, improved cosmetics and better retention



miniReceiver 3.0 Cable Bending 10 / 10 fit correctly – out of the box

Higher physical fit rate
 Softer eartips and smaller receivers allow deeper insertion at high comfort, even into small ear canals.

Cosmetically appealing
 Improved cable/tube bending and in-ear position ensures a closer fit on the ear, making it less visible. Every variant is available in the lengths 0-4.

Better retention
 A special bending of the cable/tube and its outlet locks the acoustic coupling reliably into the ear canal, with no lateral migration and no need for an anchor.

New eartips and new sleeves
 Compatible with miniReceiver 3.0 and ThinTube 3.0 and easier for your clients to exchange (compared to click domes).

The sleeve portfolio has been extended by a Power option - ensuring optimal acoustical coupling also for severe hearing losses. Compatible with ThinTube 3.0 and miniReceiver 3.0.

Smaller hearing aids
 The introduction of a substantially smaller attachment point allows for smaller RIC designs overall.

Improved usability
 The improved interface makes the new Eartips & Sleeves much easier for consumers to exchange (compared to click-domes).

Acoustical fitting performance of miniReceiver 3.0 portfolio

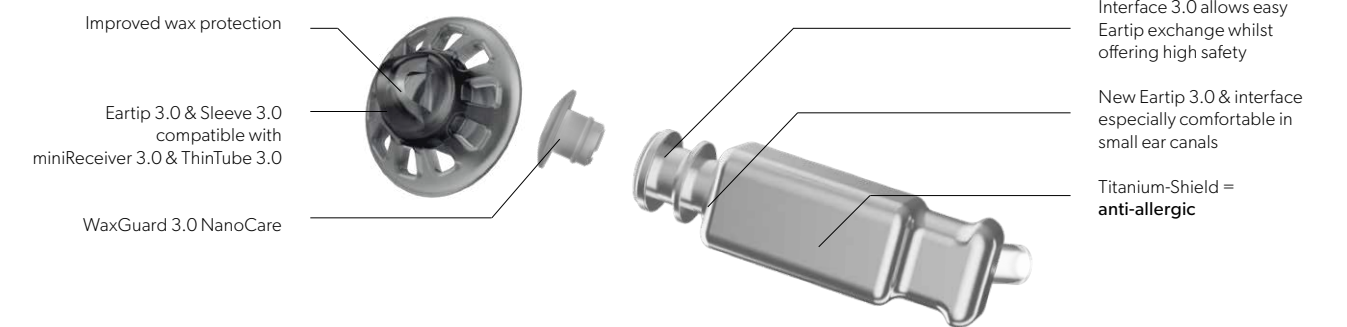
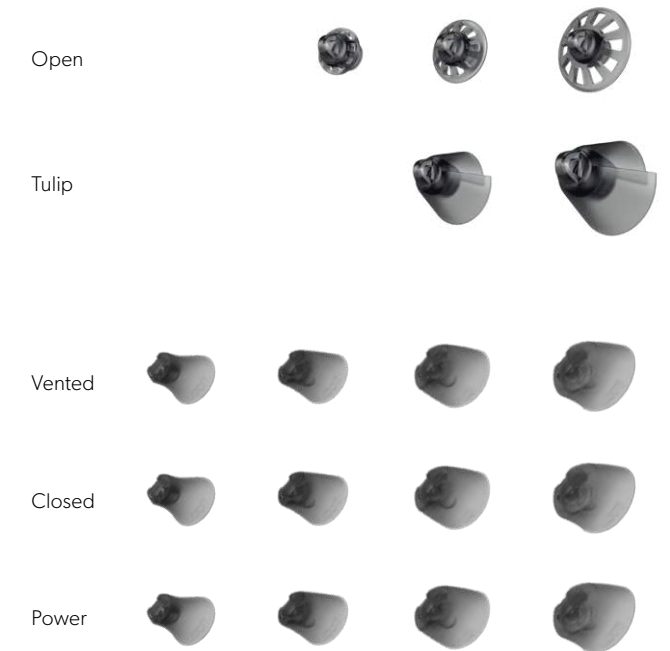
	S		M		P		HP	
	2ccm coupler	Ear simulator	2ccm coupler	Ear simulator	2ccm coupler	Ear simulator	2ccm coupler	Ear simulator
OSPL 90 (Peak)	110 dBSPL	120 dBSPL	119 dBSPL	129 dBSPL	122 dBSPL	131 dBSPL	130 dBSPL	138 dBSPL
138 dBSPL	46 dB	57 dB	60 dB	70 dB	65 dB	75 dB	75 dB	83 dB

EarWear 3.0

New eartips and sleeves

This versatile new range is suitable for the vast majority of ear anatomies and hearing needs

Soft eartip noses allow for deep insertion with high comfort - also into small ear canals. The new Power Sleeve 3.0 expands the acoustically highly reliable sleeve to also offer a fully closed option. Secure, proven design makes Eartips 3.0 and Sleeves 3.0 much easier for consumers to exchange. All Earwear 3.0 items can be used together.



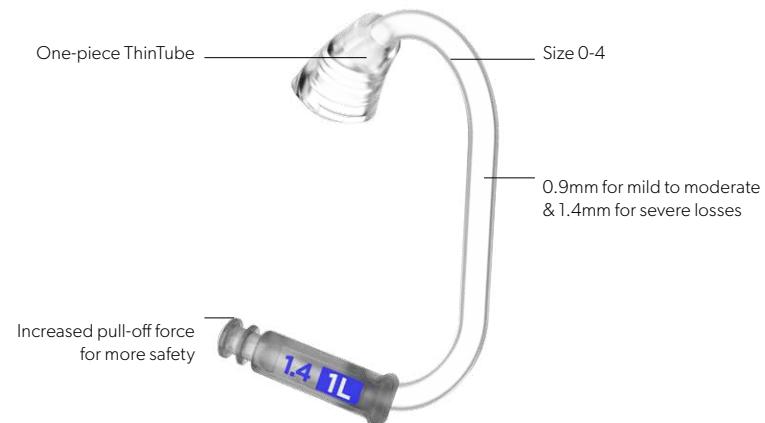
EarWear 3.0

New receivers and thin tubes

The new miniReceiver 3.0 and ThinTube 3.0 use the same eartips and sleeves for maximum simplicity and the same cable/tube geometry for best cosmetics

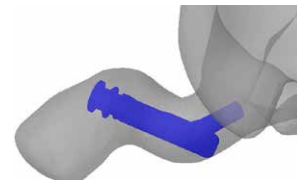


Both ThinTube 3.0 options offer proven better retention, comfort, usability and physical fit rate. The new 1.4mm-width PowerTube also delivers a cosmetically appealing solution for more severe degrees of hearing loss.



Cosmetics

New tube/cable bending and in-ear position improves cosmetics of tube/cable on the ear. 25% size reduction of plug system allows for smaller hearing aids.



Retention

Improved bending of tube/cable + outlet locks the acoustical coupling reliably into the ear canal, prevents lateral migration and makes concha-locks redundant.



EarWear 3.0

Tools and starter kits

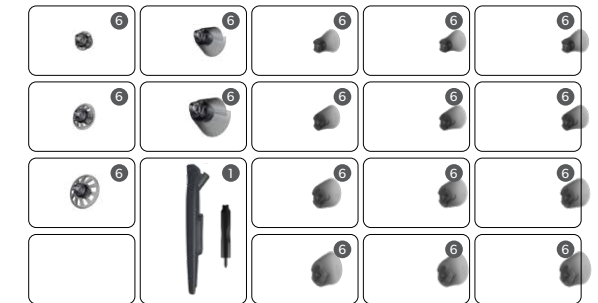
Starter kits are available for each solution: Eartips 3.0, ThinTube 3.0 and miniReceiver 3.0

Each kit includes specific items required for that type of EarWear 3.0. These include:

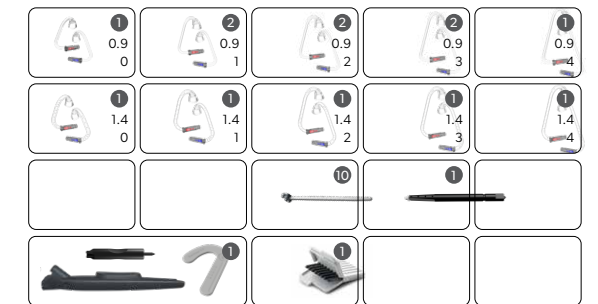
- Measurement gauge to ensure a perfect match for miniReceivers and ThinTubes
- Matchbook containing 8 Wax Guard 3.0 NanoCare
- 10-pack of new one-size-fits-all Concha Locks 3.0
- Optional tool for exchanging eartips
- Tool to press out the receiver from a custom eartip

You also receive instruction manuals on how to use EarWear 3.0, covering everything from eartips and sleeves to attaching or removing ThinTubes or miniReceivers to exchanging earmolds or WaxGuards.

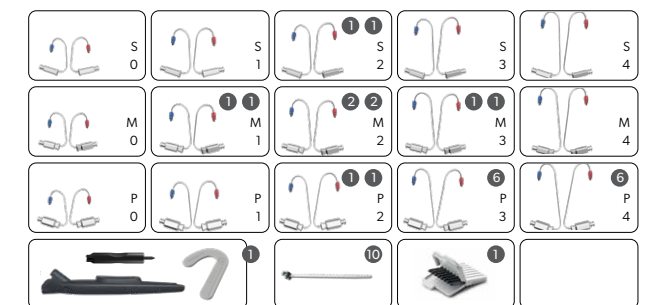
Starter kits Eartips 3.0 contents



Starter kits ThinTube 3.0 contents



Starter kits miniReceiver 3.0 contents



EarWear 3.0

Table compatibility EarWear to devices

Different types of EarWear 3.0
are compatible with different
products

Here is an overview of the current compatibility of each
solution with our range of hearing aids

	ThinTube 3.0	miniReceiver 3.0	Eartips 3.0 & Sleeves 3.0	Earmold 3.0	ThinTube	Life-Tips	Life-Earmold	miniReceiver 2.0	Click Domes & Click Sleeves	Click Mold
Pure AX series	-	●	●	●	-	-	-	-	-	-
Motion X series ¹	●	-	●	●	-	-	-	-	-	-
Pure X series	-	-	-	-	-	-	-	●	●	●
Styletto X series	-	-	-	-	-	-	-	●	●	● ²
Silk X series	-	-	-	-	-	-	-	-	●	-
Pure Nx series	-	-	-	-	-	-	-	●	●	●
Motion Nx series	-	-	-	-	●	●	●	-	-	-

¹Motion SP X is not compatible with ThinTube 3.0.

²Click molds are not recommended with Styletto X due to size constraints of the Styletto X charger.

About Signia

Signia is one of the leading hearing aid brands in the world. Our goal is to enhance human performance through iconic innovations that shape prescription audio solutions. We refuse to accept hearing loss as a limitation. It's not about correcting a loss, it's about gaining an edge. Not just performing, performing brilliantly. Not just hearing again, but hearing better than ever. Hearing every word, beat, and breath. With Signia, you can Be Brilliant.

Find out more on signia-pro.ca





Or ask your hearing care professional for more information on Signia hearing aids, useful accessories and the Signia app.

The information in this document contains general descriptions of the technical options available, which do not always have to be present in individual cases and are subject to change without prior notice. Signia is a registered brand of WS Audiology Canada Inc.

Legal Manufacturer
WS Audiology Canada Inc.
5041 Mainway
Burlington, ON L7L 5H9
1-800-663-0620

102 424 42 | Printed in Canada | SIG-21-138
© 06.2021 WSAUD A/S. All rights reserved.

Find us on

-  signia-hearing.ca
-  facebook.com/signiahearingcanada
-  youtube.com/signiahearing
-  instagram.com/signiacanada